



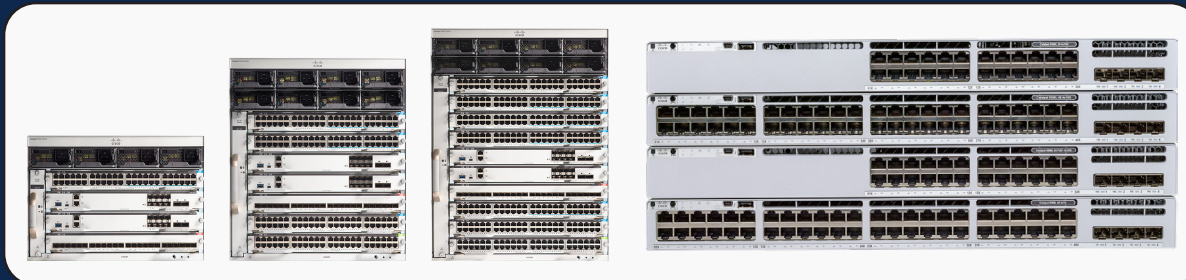
Cisco ThousandEyes Campus Service Assurance with Cisco Catalyst 9000 Switches

Today's campus environments are deeply interconnected with Software-as-a-Service (SaaS) applications, cloud-based services, and many service providers across the global internet. Every day, users access externally hosted applications over hundreds of networks outside of your control. You may not own these networks, but you still own service delivery outcomes—outcomes that can be impossible to influence when you have no visibility outside the campus. When users inevitably experience poor performance or service disruptions, it can take hours or even days to determine if the problem is your network, someone else's network, or the application.

Cisco® ThousandEyes Internet and Cloud Intelligence delivers end-to-end visibility from your campus networks to internet, SaaS, and cloud-based services that are critical to your business but outside your direct control, enabling you to meet service commitments and ensure excellent user experience.

Cisco ThousandEyes Benefits

- Reduce fault isolation from days to minutes
- Gain evidence-based escalations with providers
- Optimize application performance over any network



Visibility from switch to SaaS—and everything in between

Cisco ThousandEyes visibility, combined with the Cisco Catalyst® 9300 and 9400 Series access switches for campus and branch offices, enables enterprises to rapidly gain insight into external services from within the campus LAN, where users are connected.

Use Cisco ThousandEyes on the Catalyst 9300 and 9400 Series to:


- Help ensure the reachability and availability of campus-critical SaaS, internally hosted apps, and cloud-based services over any network
- Measure and track employee experience in SaaS applications such as Microsoft 365, Salesforce, and Cisco Webex®
- Gain visibility into SD-WAN deployments through in-depth visibility into both underlay and overlay network performance
- Correlate external service delivery paths with internal LAN and network device metrics, and alert and report on the health and availability of all services connected to the campus
- Gain insights into device performance and network topology maps through Simple Network Management Protocol (SNMP) polling and automatic device discovery

Campus connectivity	Application experience	Modern WAN
See end-to-end network paths and metrics from the campus LAN to SaaS, internal apps, IT services, and network endpoints.	Understand how users are experiencing an application with page load waterfalls and metrics, and multistep transactions that go beyond an application's front door.* *Requires SSD storage option on Catalyst 9300 and 9400 Series.	Correlate overlay visibility with a hop-by-hop Layer 3 underlay path, helping you maintain visibility into underlying network transport and external Border Gateway Protocol (eBGP) routing when deploying SD-WAN and cloud-based security services.

Cisco ThousandEyes on Catalyst 9300 and 9400 Series Switches

Catalyst 9300 and 9400 Series switches with a Cisco DNA Advantage subscription natively support the Cisco ThousandEyes Enterprise Agent and will receive one Cisco ThousandEyes network/web test (run at 5-minute intervals) included with their subscription license.

For each supported Catalyst 9000 switch and Cisco DNA subscription tier, customers can run scheduled tests on applications or network endpoints and visualize the entire network path, alongside correlated performance from application, network, routing, and even network devices.

	Cisco DNA Advantage
<p>Cisco ThousandEyes Network and Application Synthetics</p> <p>One network/web test running at a 5 minute interval is included per license.*</p> <p>*Each Catalyst 9300 or 9400 Cisco DNA Advantage subscription entitles each Customer Organization (as defined below) to run the equivalent of 22 units per month of network or web test capacity, not to exceed the maximum of 110,000 units per month of ThousandEyes test capacity per Customer Organization, regardless of the number of purchased Cisco DNA Advantage licenses. A ThousandEyes network or web test every can run every 5 minutes subject to the foregoing. For example only, if customer has 10 DNA Advantage licenses, then customer may run up to 220 units of network or web test capacity. ThousandEyes Cloud Agent access is not included in the Cisco DNA license entitlement. Test capacity can be increased and Cloud Agents accessed with purchase of additional ThousandEyes Network and Application Synthetics. The Cisco DNA license entitlements will ONLY be provisioned in Customer Organizations on the usage billing model. Customer Organizations on the legacy metered billing model are ineligible. "Customer Organization" means Customer and its Affiliates (as defined in the Cisco End User License Agreement) collectively who are Cisco DNA Advantage license holders.</p> <p>See offer terms here: www.thousandeyes.com/legal</p>	

Next steps

Combining Cisco ThousandEyes with the Catalyst 9300 or 9400 Series switches (with a Cisco DNA Advantage subscription) enables rapid visibility into network performance and application experience.

For new switch purchases:

If you are considering purchasing a new Catalyst 9300, 9300L or 9400 series switch and want to learn more about how Cisco ThousandEyes enhances the IT management experience, contact your Cisco representative today.

For customers with Cisco DNA Essentials subscriptions:

If you own Catalyst 9300, 9300L or 9400 series switches with Cisco DNA Essentials subscription and want to learn about how you can unlock the value of Cisco ThousandEyes, ask your Cisco representative about upgrading your subscription.

For customers with Cisco DNA Advantage subscriptions:

For customers who already own Catalyst 9300, 9300L or 9400 series switches with Cisco DNA Advantage subscriptions, check your Cisco Smart Software Manager and accept your Cisco ThousandEyes entitlement listed there. Following this, you will receive an email with instructions for deploying your Cisco ThousandEyes Enterprise Agents.

[Get more information from Cisco ThousandEyes activation guide.](#)

Cisco ThousandEyes Enterprise Agent hosted on Catalyst 9300 and 9400 Series Switches

		Cisco ThousandEyes Enterprise Agent on flash	Cisco ThousandEyes Enterprise Agent on SSD
App mode		Embedded	Custom
Type of agent		Lightweight Enterprise Agent	Full Enterprise Agent
App hosting container		Docker	Docker or KVM
Resources	Minimum required CPUs	1 vCPU	2 vCPUs
	Maximum allowed CPUs	2 vCPUs	2 vCPUs
	Memory	2 GB RAM	2 GB RAM
	Storage reserved for app	1 GB for persistent logging by app in the flash file system.	Depends on size of SSD
Cisco ThousandEyes tests		Network HTTP DNS server DNS trace DNSSEC SIP/RTP FTP	Page load Transaction + Network HTTP DNS server DNS trace DNSSEC SIP/RTP FTP